



[www.santafeaudubon.org](http://www.santafeaudubon.org) and



Santa Fe Audubon Society - Florida

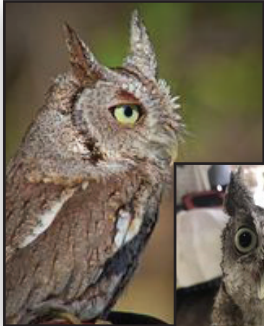
**Santa Fe Audubon Society**

Melrose, FL

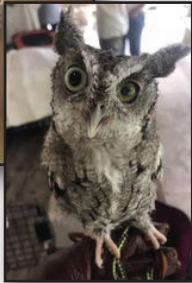


**OCTOBER 2022  
NEWSLETTER**

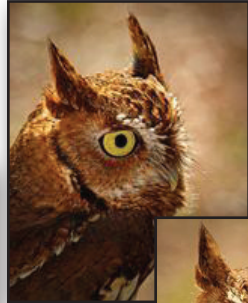
**TUESDAY, NOVEMBER 15**  
**Sunrise Wildlife Rehabilitation**  
**WILDLIFE AMBASSADORS**



*Odin*



*Ruby*



*I'Lean*



*Rocky*

Please join us to learn about Sunrise Wildlife Rehabilitation and their wonderful work. They will be bringing a few of their "Wildlife Ambassadors": Odin and Ruby, Eastern Screech-Owls, Rocky a sweet little Flying Squirrel (who is currently on a diet), and I'Lean the Gopher Tortoise.

<https://www.sunrisewildlife.org/>

**6:45 PM** at Trinity Episcopal Parish Hall (204 SR 26 downtown Melrose) on Tuesday, November 15, 2022.

You do not need to be a Santa Fe Audubon Society chapter member to attend our Speaker Series programs. All are welcome!

*The safety of our membership is of utmost importance, and we encourage everyone to wear a mask.*

The safety and well-being of our membership and board members is our top priority; therefore, our in-person Speaker Series may be postponed or canceled on short notice due to health related concerns. Cancellation notifications will be sent out via email and posted on our website and Facebook page.

**FIELD TRIP**  
**NOVEMBER 19**

**SATURDAY, NOVEMBER 19**  
**LITTLE ORANGE CREEK PRESERVE**

This Hawthorne property is interesting even from the highway, where birds such as turkey and egrets are routinely spotted. Our group will explore the area with the Danny Rohan, Alachua Conservation Trust, who will explain the general background of the conservation work and provide an overview of the pine restoration efforts on the preserve. Sallie Carlock, field trip contact.

**LIMIT 10 PARTICIPANTS • RESERVATIONS REQUIRED**

**DIFFICULTY LEVEL: 2**

May involve uneven terrain; 1-2 miles • Approx. 2-3 hours

Meet at **8:00 AM** at Melrose Heritage Park (west side) to caravan  
or

**8:45 AM** in the **NORTH PARKING AREA**

Little Orange Creek Preserve

24115 SE Hawthorne Road (St Rd 20), Hawthorne

**NO RESTROOMS at this Field Trip location**

We will be limiting the number of participants on all field trips. We ask that all observe personal distancing and suggest bringing a mask for everyone's protection, just in case it is needed.

Reservations for each trip will be filled on a first-come first-served basis with waiting lists in case of participant cancellation. Please be sure to include the field trip name and date along with your name, phone number(s) and e-mail address, in case we need to notify you of any changes. Field Trip Guidelines are on page 3.

**TO RESERVE YOUR SPOT, email**  
**[santafeaudubonfl@aol.com](mailto:santafeaudubonfl@aol.com)**

**REMINDER**  
**TUESDAY, OCTOBER 18**

Our "**Welcome Back**" gathering and award presentation of our 2020 "Conservationist of the Year" to Timothy (Tim) Keyser, President of Putnam Land Conservancy.

**6:45 PM** at Trinity Episcopal Parish Hall (204 SR 26 downtown Melrose) on Tuesday, October 18, 2022.

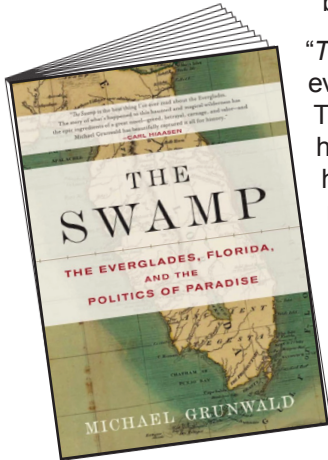
You do not need to be a Santa Fe Audubon Society chapter member to attend our Speaker Series programs. All are welcome!

## RECOMMENDED READING

by Jacqueline Williamson

### THE SWAMP THE EVERGLADES, FLORIDA, AND THE POLITICS OF PARADISE

by Michael Grunwald



"The Swamp is the best thing I've ever read about the Everglades. The story of what's happened to this haunted and magical wilderness has the epic ingredients of a great novel – greed, betrayal, carnage, and valor – and Michael Grunwald has beautifully captured it all for history."

-- Carl Hiaasen

## GOOD NEWS



After a very difficult nesting season in 2021, Black Skimmers on St. Pete Beach in Pinellas County, fledged more than 200 chicks this season, May to September, 2022.

#### Tips for Helping the Black Skimmers:

- Keep your distance and respect posted areas.
- Avoid flushing birds.
- Keep pets off the beach and away from nesting areas. Even the friendliest dog will spook an entire skimmer colony.
- Spread the word. Tell others how they can help these amazing birds!

## BIRD OF THE MONTH

### PALM WARBLER

(Setophaga palmarum) band code "PAWA"



"Western" non-breeding



Eastern "Yellow" non-breeding



A warbler that doesn't act like one, the Palm Warbler spends its time walking on the ground, wagging its tail up and down. This brownish-olive bird has a bright rusty cap and a bold pale eyebrow stripe. They breed mainly in Canada's boreal forest, but most people see them during migration or on wintering grounds foraging in open areas. You may see two forms: an eastern subspecies that's bright yellow below, and a more western subspecies with a pale belly.

#### COOL FACTS:

The subspecies of Palm Warbler in the East ("Yellow" Palm Warbler) migrates earlier in the spring than its western counterpart. "Yellow" Palm Warblers start moving north in early April and Western Palm Warblers start moving north shortly thereafter. The two subspecies of Palm Warbler also migrate along different routes in spring; the "Yellow" Palm Warbler travels east of the Appalachian Mountains while the "Western" Palm Warbler migrates through the Mississippi Valley.

For more information about Palm Warblers visit:

[HTTPS://WWW.ALLABOUTBIRDS.ORG/GUIDE/PALM-WARBLER/OVERVIEW](https://www.allaboutbirds.org/guide/palm-warbler/overview)

**Fun Fact:** A group of warblers are collectively known as a "reading" of warblers.



# ABOUT FIELD TRIPS

## **RESERVATIONS REQUIRED FOR ALL FIELD TRIPS**

**TO RESERVE YOUR SPOT, email [santafeaudubonfl@aol.com](mailto:santafeaudubonfl@aol.com)**

*We all must remember to maintain safe personal distancing. We suggest you bring your face mask just in case it is needed.  
It is easy to forget during the excitement of bird watching.*

**BRING:** Water, binoculars, hat, sunscreen, rain gear and face covering.

Please, **NO SHARING OPTICS**. The field trip contact has sanitized binoculars to loan.

**WEAR STURDY WALKING SHOES.**

Field Trip contacts keep waiting lists in case of a cancellation.

Stay hydrated, be safe and have **FUN!**



### **CARAVAN FROM MELROSE**

Please arrive early and be ready to leave with your supplies: water, binoculars, hat, sunscreen, rain gear and **STURDY WALKING SHOES**.

Santa Fe Audubon has extra binoculars to lend.

Meet on the **west side** of Melrose Heritage Park, SR 26, downtown Melrose. Or meet at the field trip site. When you make your reservation, please specify if you will meet at Heritage Park or the Field Trip location.

### **FIELD TRIP DIFFICULTY CHART**

- 0** - Impaired mobility has been considered for this trip. The SFAS Contact has details.
- 1** - Trip within easy access to the vehicle and/or level terrain; 1 mile or less.
- 2** - May involve uneven terrain; 1-2 miles.
- 3** - May involve elevation change, uneven terrain, and/or be greater than 2 miles.



## **BIRDING ETHICS** (including photography)

*Practical guidelines that aim to mitigate the stress birds and their habitats face when humans intrude.*

- Leave pets home
- Bring binoculars
- Mute cell phones
- Gently close vehicle doors
- Talk softly/whisper
- Keep bird call playback and pishing to a minimum.
- Walk quietly in woods (pick up feet)
- Avoid using a flash when taking photographs
- Keep your distance
- DO NOT flush or disturb birds (especially during spring nesting season)
- Stay on established trails
- Be alert for bird sounds/movements
- Coughing/sneezing? Stay away from group or, if possible, in vehicle
- Respect other birders
- Wear earth tone color clothing, when possible
- Stay hydrated and safe

## **SCHEDULED FOR DECEMBER**

### **SPEAKER SERIES**

**Tuesday, December 13**

Dr. Ken Meyer of ARCI

(Avian Research and Conservation Institute)

will talk about Snail Kites and Crested Caracaras

To learn more about ARCI visit their website: [www.arcinst.org](http://www.arcinst.org)

### **FIELD TRIP**

**no field trip is scheduled at this time**



## BECOME A CHAPTER MEMBER TODAY!

### August 2022 – July 2023

All chapter membership dues support local activities, programs,  
& projects of Santa Fe Audubon & are tax deductible.

#### Regular Chapter Member:

Individual \$20

Family \$30

#### OR Become a Special Chapter Supporter!

Eastern Bluebird .....\$50

Swallow-tailed Kite .....\$100

Bald Eagle .....\$250

Whooping Crane.....\$500

Ivory-billed Woodpecker .....\$1000

#### Make check payable and mail to:

***Santa Fe Audubon Society***

***PO Box 533 • Melrose, FL 32666-0533***  
***(PLEASE PRINT)***

Name \_\_\_\_\_

Address \_\_\_\_\_

\_\_\_\_\_

City \_\_\_\_\_

State \_\_\_\_\_ Zip \_\_\_\_\_

COUNTY \_\_\_\_\_

E-mail \_\_\_\_\_

Phone \_\_\_\_\_

---

***Are you now a member of National Audubon? Y / N***

#### **National Audubon Society**

Benefits: Receive Audubon magazine;  
learn more about national conservation issues.

To join, go to [www.audubon.org](http://www.audubon.org);  
click on "Join Audubon" at bottom of the page.

***THANK YOU!***

---

A copy of the official registration and financial information may be obtained from the  
Division of Consumer Services by calling Toll-Free within the State. Registration does  
not imply endorsement, approval, or recommendation by the State.

1-800-HELP-FLA (435-7352) SFAS registration number CH30159

kite 8-2022